

Supplementary materials

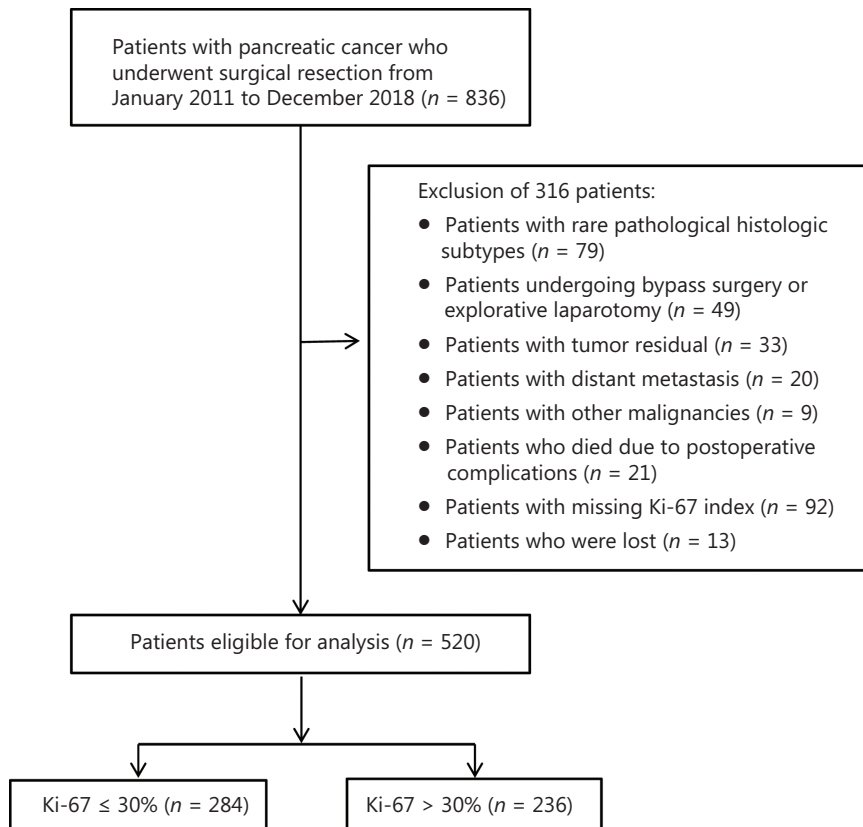


Figure S1 Flow diagram detailing the selection of patients included in this study.

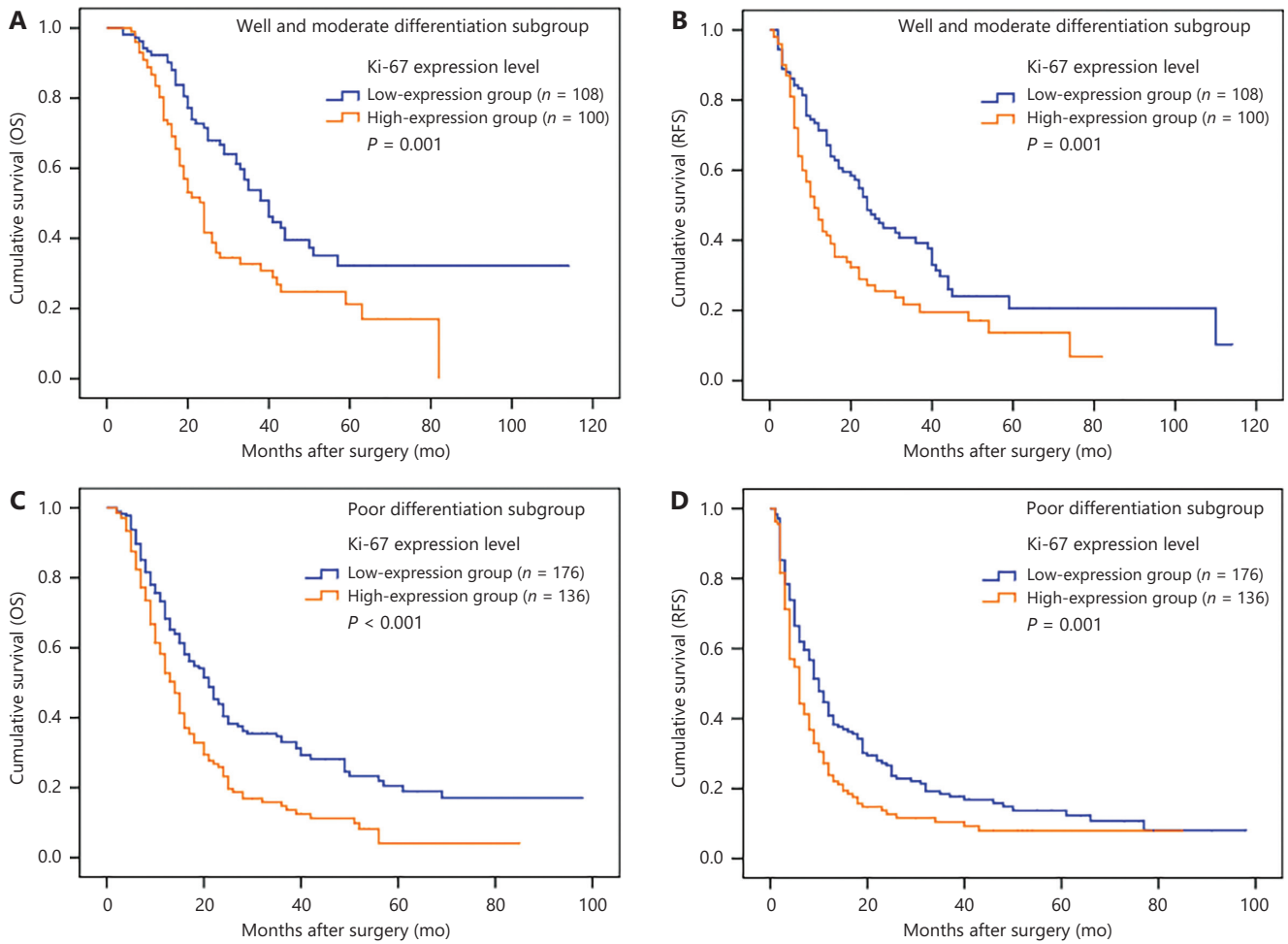


Figure S2 Stratification of OS and RFS curves on the basis of histopathological differentiation to examine the prognostic effects of the Ki-67 index. (A) OS curves of patients with well and moderately differentiated tumors. (B) RFS curves of patients with well and moderately differentiated tumors. (C) OS curves of patients with poorly differentiated tumors. (D) RFS curves of patients with poorly differentiated tumors.

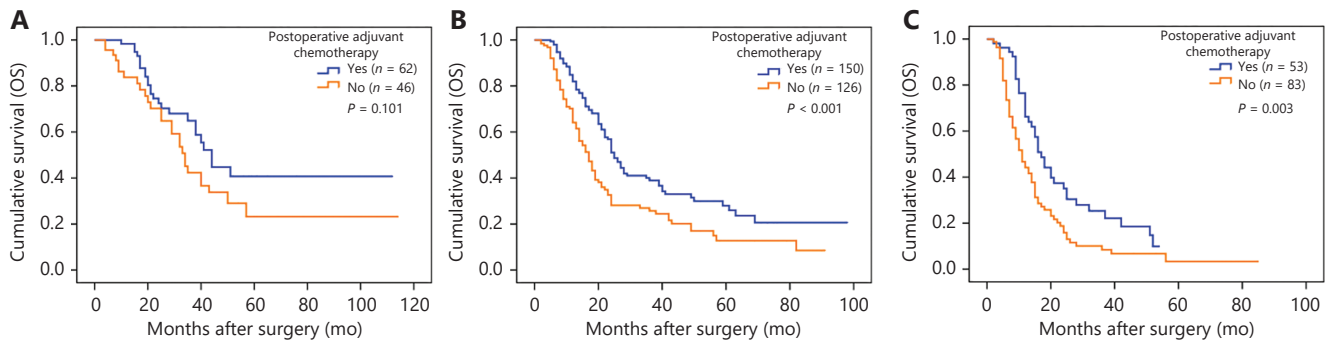


Figure S3 Stratified analysis according to the grade of malignancy (GOM) to examine the influence of postoperative adjuvant chemotherapy on the overall survival of patients with different GOM. (A) Patients with low-grade tumors. (B) Patients with middle-grade tumors. (C) Patients with high-grade tumors.

Table S1 Stratified survival analysis of patients with pancreatic cancer according to TNM stage, to examine the effect of the GOM on survival

TNM stages	GOM			$P_{(low\ vs.\ middle)}$	$P_{(middle\ vs.\ high)}$	$P_{(low\ vs.\ high)}$
	Low	Middle	High			
Overall survival (MST)						
I	57.0	27.0	22.0	0.012	0.024	< 0.001
II	32.0	22.0	15.0	0.092	0.014	0.001
III	32.0	16.0	9.0	0.014	0.001	< 0.001
Recurrence-free survival (MRT)						
I	32.0	19.0	11.0	0.109	0.036	< 0.001
II	24.0	10.0	8.0	0.024	0.134	0.003
III	18.0	6.0	4.0	0.001	0.004	< 0.001

MST, median survival time; MRT, median recurrence-free survival time; GOM, grade of malignancy.

Table S2 Stratified survival analysis of patients with pancreatic cancer according to the GOM, to examine the effect of postoperative adjuvant chemotherapy on overall survival

GOM	Postoperative adjuvant chemotherapy		χ^2	P
	Yes	No		
Overall survival (MST)				
Low	44.0	34.0	2.694	0.101
Middle	25.0	17.0	13.199	< 0.001
High	17.0	11.0	9.040	0.003

MST, median survival time; GOM, grade of malignancy.