

Supplementary material

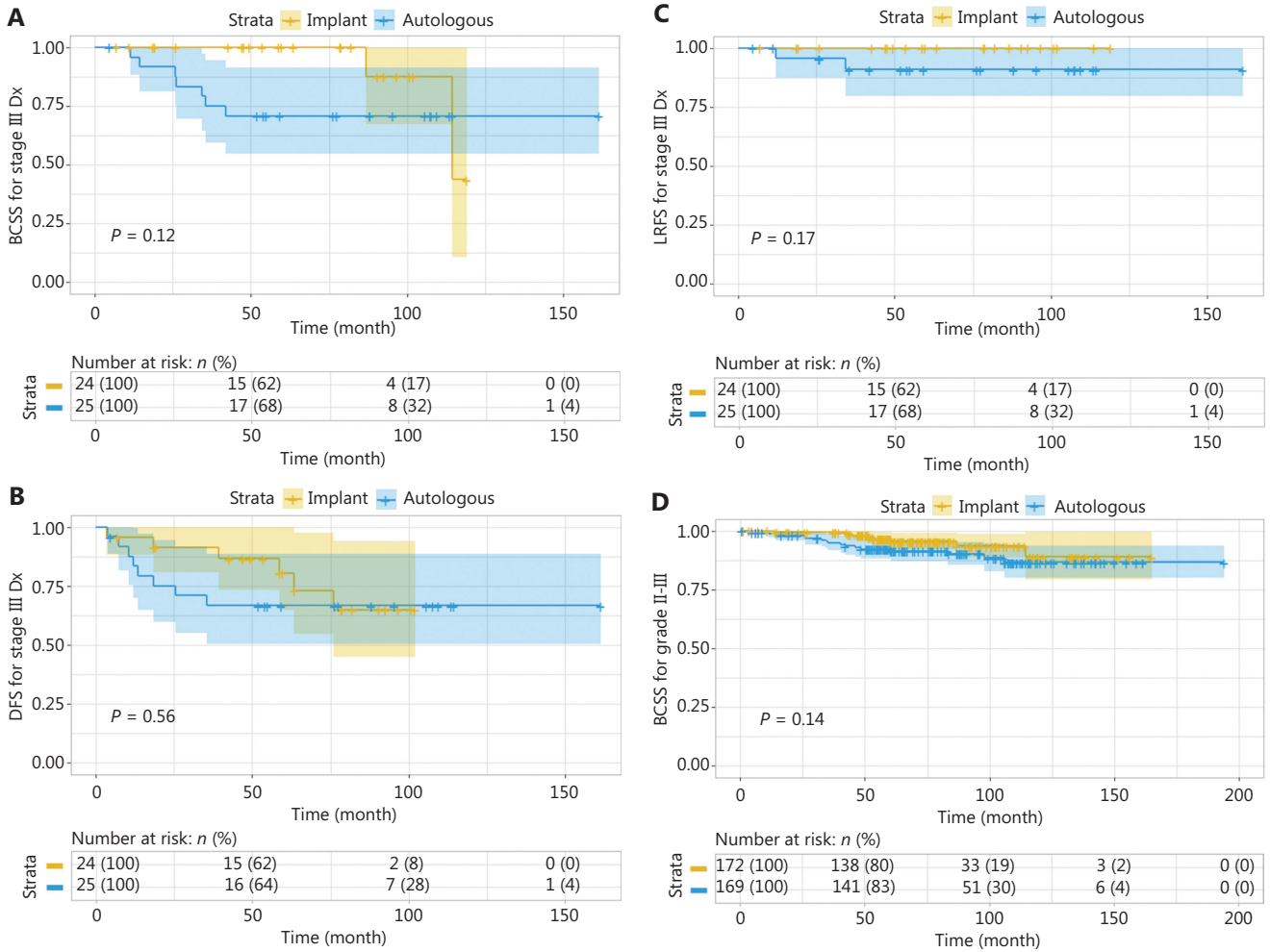


Figure S1 Continued

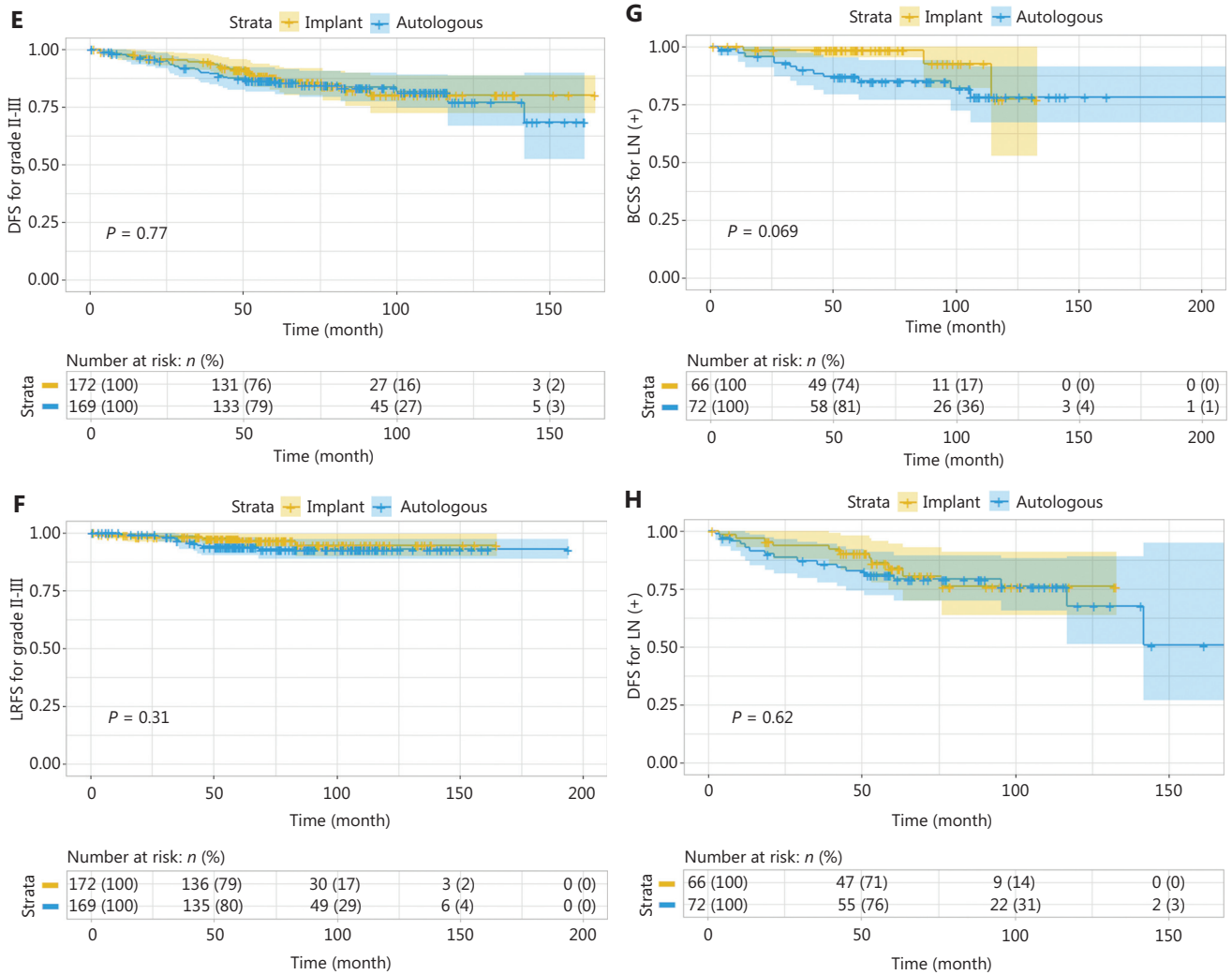


Figure S1 Continued

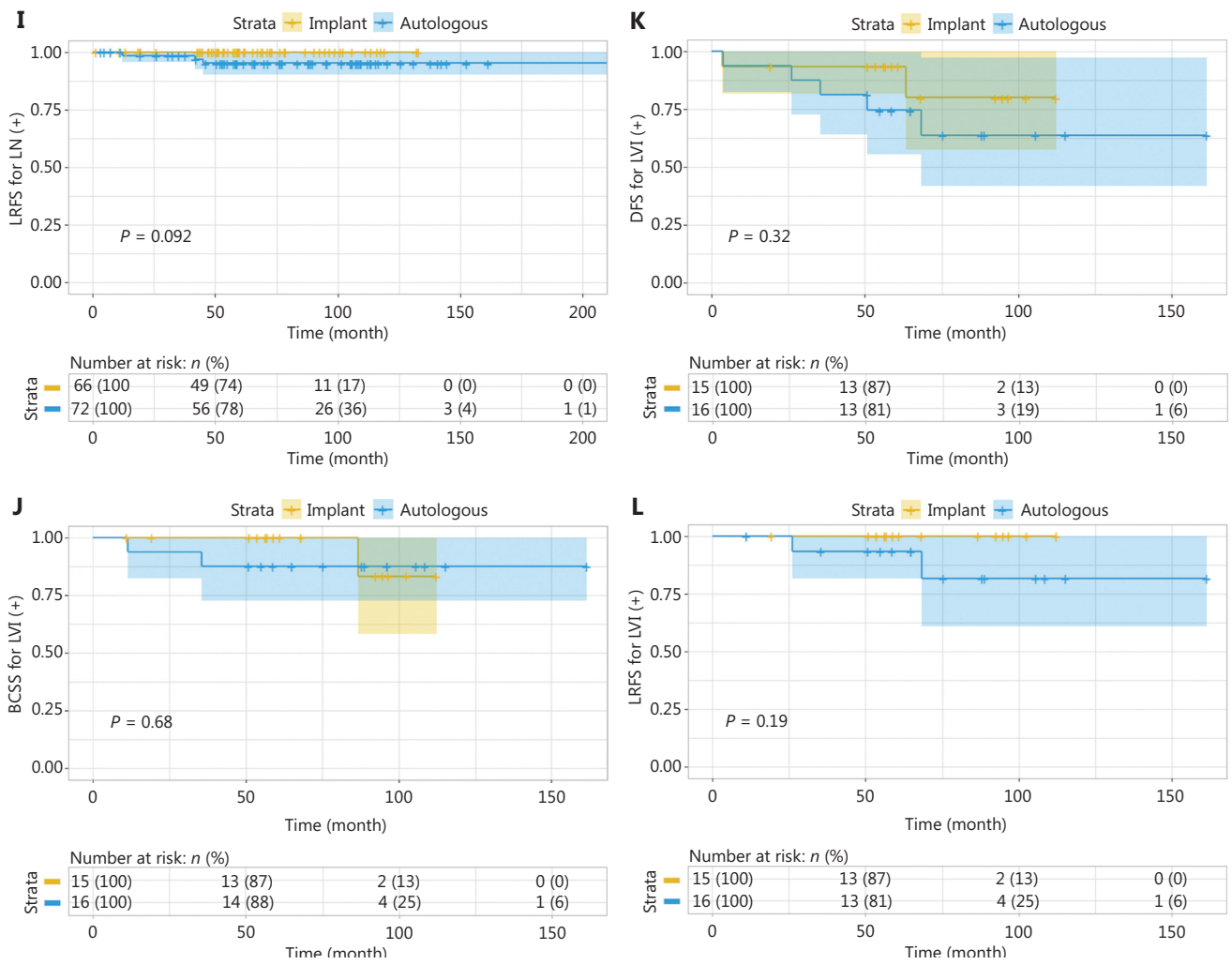


Figure S1 Breast cancer-specific survival (BCSS), disease-free survival (DFS), and locoregional recurrence-free survival (LRFS) after stratification in patients with (A–C) advanced stage, (D–F) high histological grade, (G–I) positive lymph node, and (J–L) positive lymph-venous invasion in the propensity score matched cohort.