

Supplementary materials

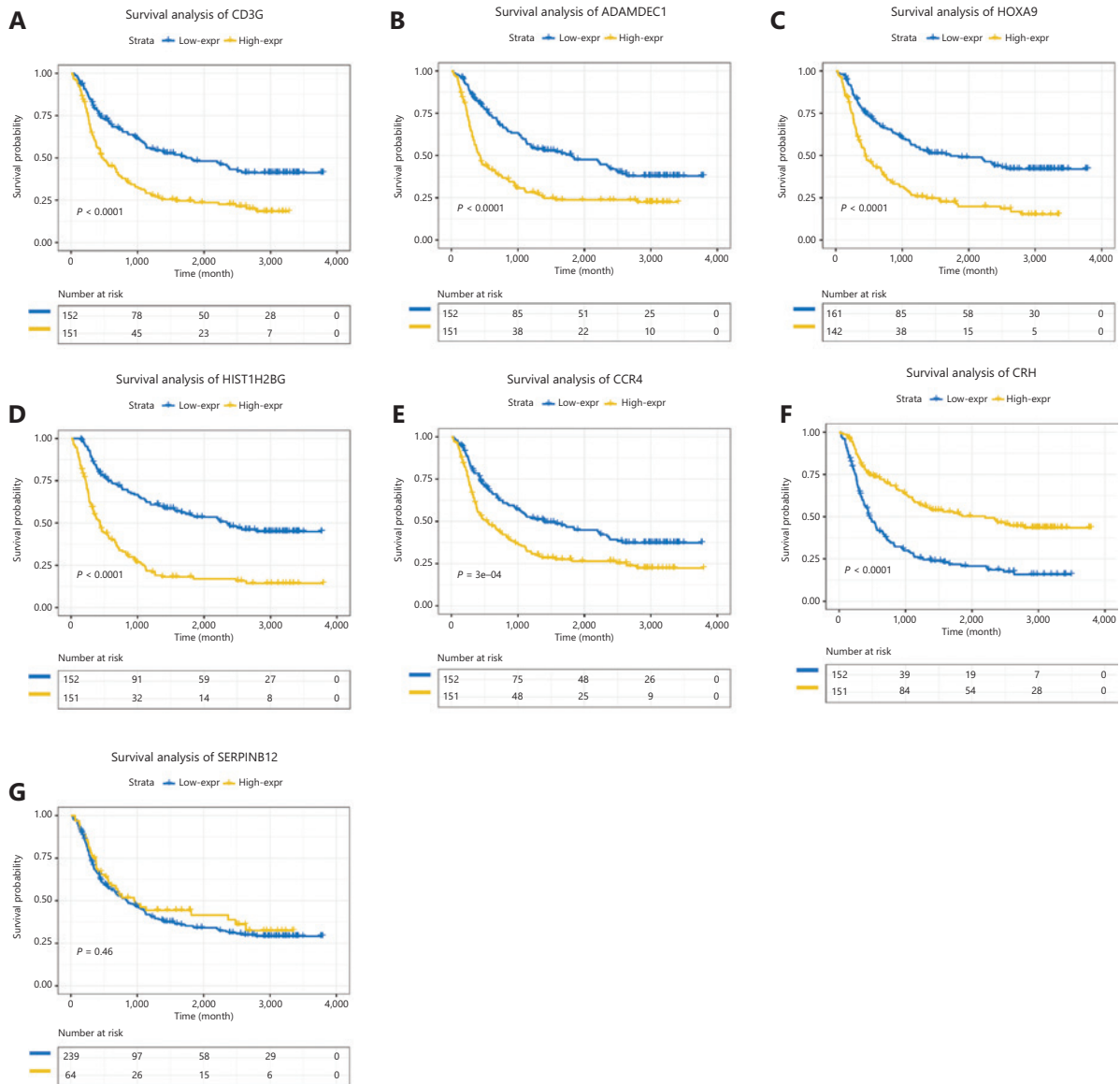


Figure S1 The survival analysis of 7 core genes in 402 immune-related gene pairs. (A–E) Kaplan-Meier analyses of overall survival based on five UGs, including CD3G, ADAMDEC1, HOXA9, HIST1H2BG and CCR4. (F, G) Kaplan-Meier analysis of overall survival based on two FGs, including CRH and SERPINB12.

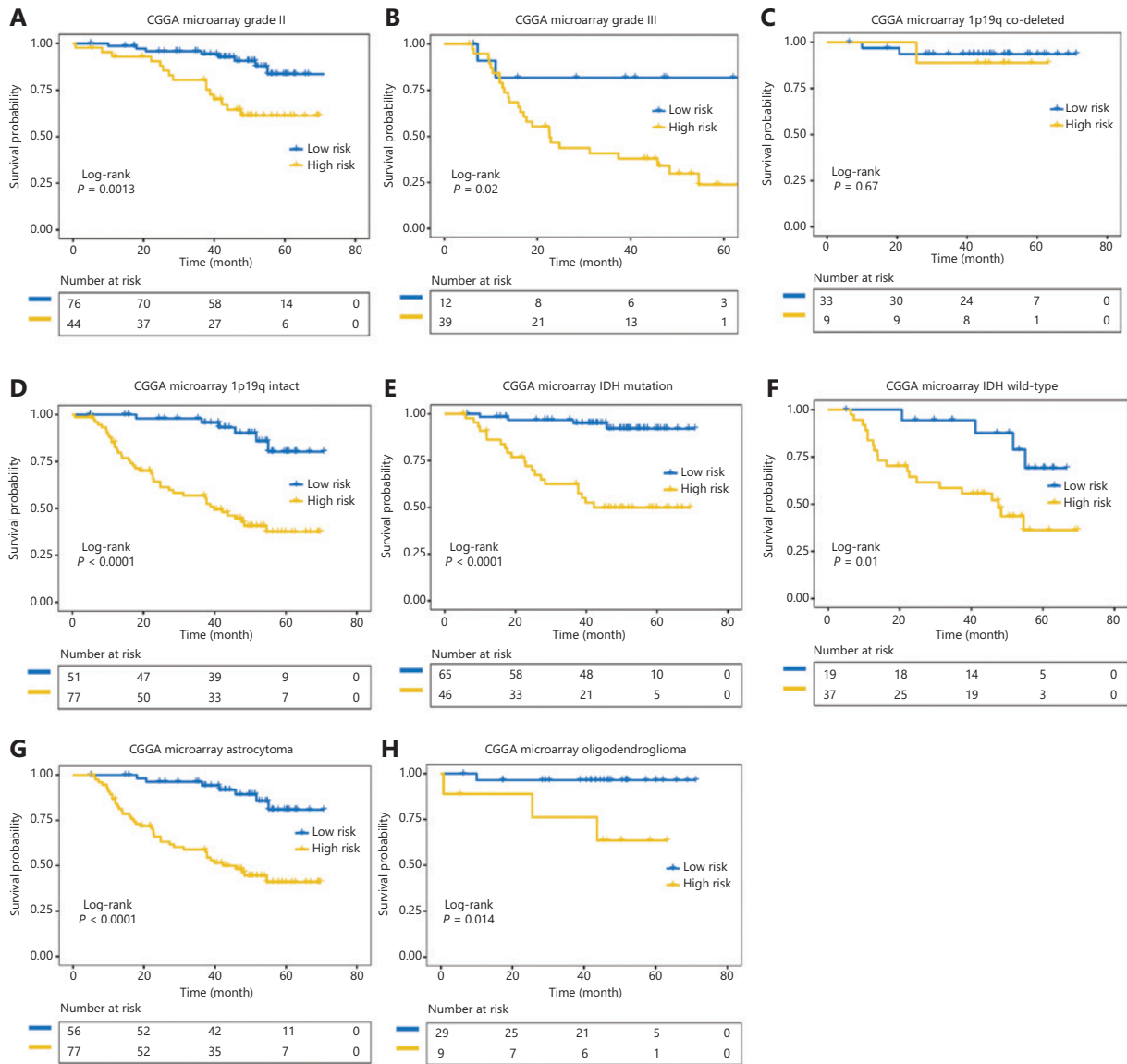


Figure S2 The clinical significance of 10 IGP signature for LGG patients in CGGA RNAseq cohort. The Kaplan-Meier survival curves for LGG patients with grade II (A), grade III (B), 1p/19q codeletion (C), 1p/19q intact (D), IDH mutation (E), IDH wildtype (F), astrocytoma (G) and oligodendroglioma (H). Patients were divided into lower and higher risk score groups and P -value was the result of log-rank test.

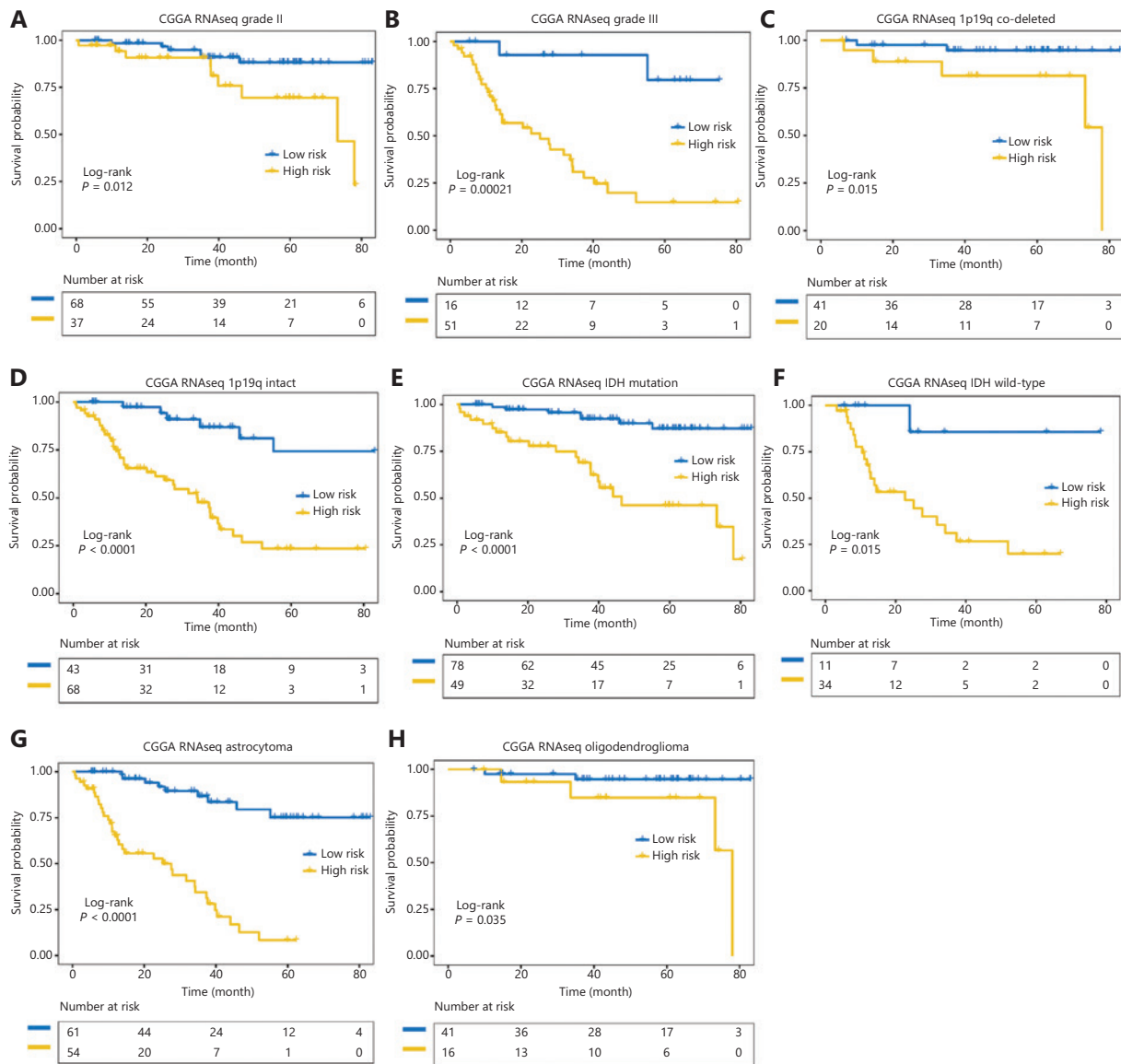


Figure S3 The clinical significance of 10 IGP signature for LGG patients in CGGA microarray cohort. The Kaplan-Meier survival curves for LGG patients with grade II (A), grade III (B), 1p/19q codeletion (C), 1p/19q intact (D), IDH mutation (E), IDH wildtype (F), astrocytoma (G) and oligodendroglioma (H). Patients were divided into lower and higher risk score groups and P -value was the result of log-rank test.

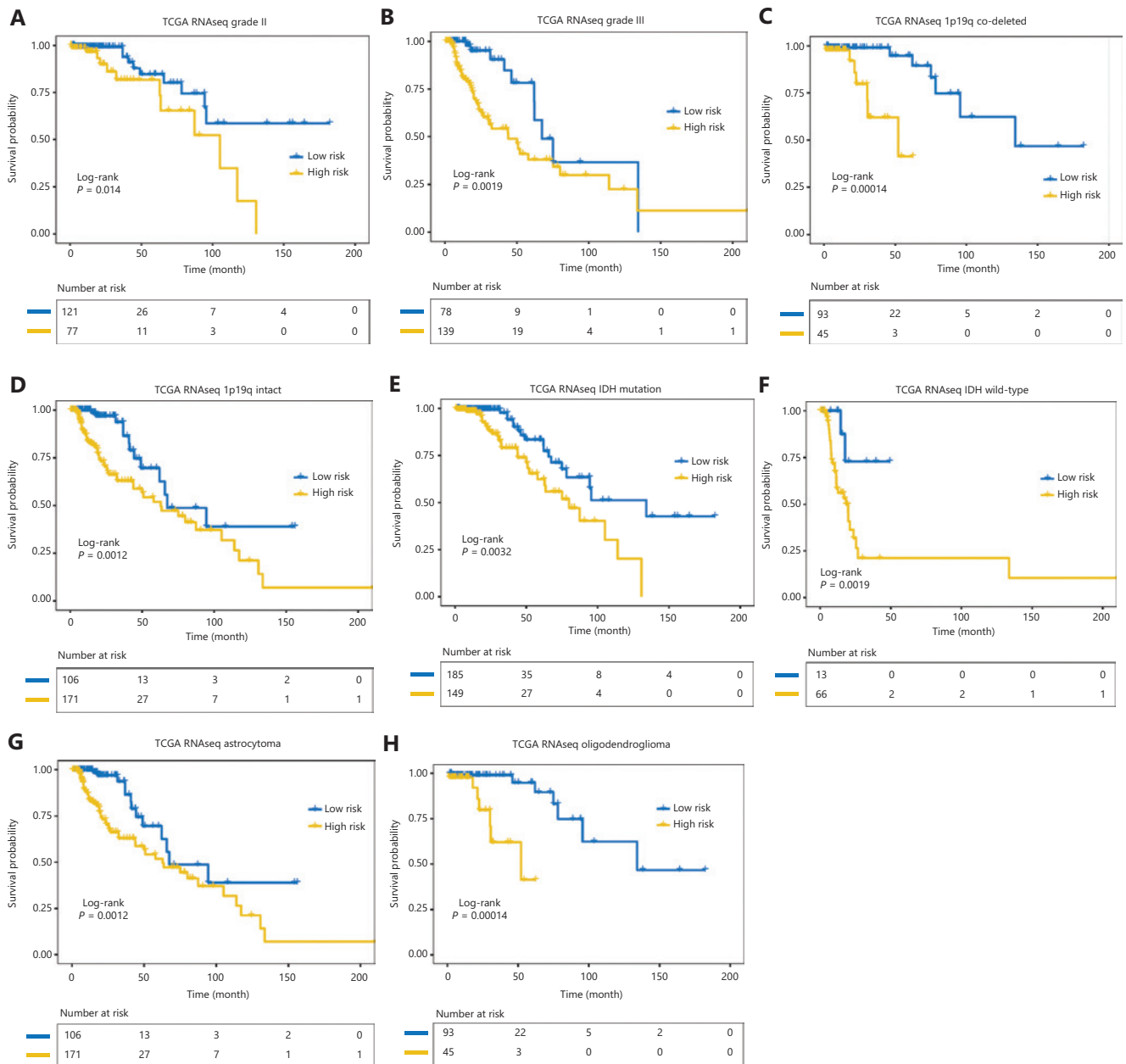


Figure S4 The clinical significance of 10 IGP signature for LGG patients in TCGA RNAseq cohort. The Kaplan-Meier survival curves for LGG patients with grade II (A), grade III (B), 1p/19q codeletion (C), 1p/19q intact (D), IDH mutation (E), IDH wildtype (F), astrocytoma (G) and oligodendroglioma (H). Patients were divided into lower and higher risk score groups and P -value was the result of log-rank test..

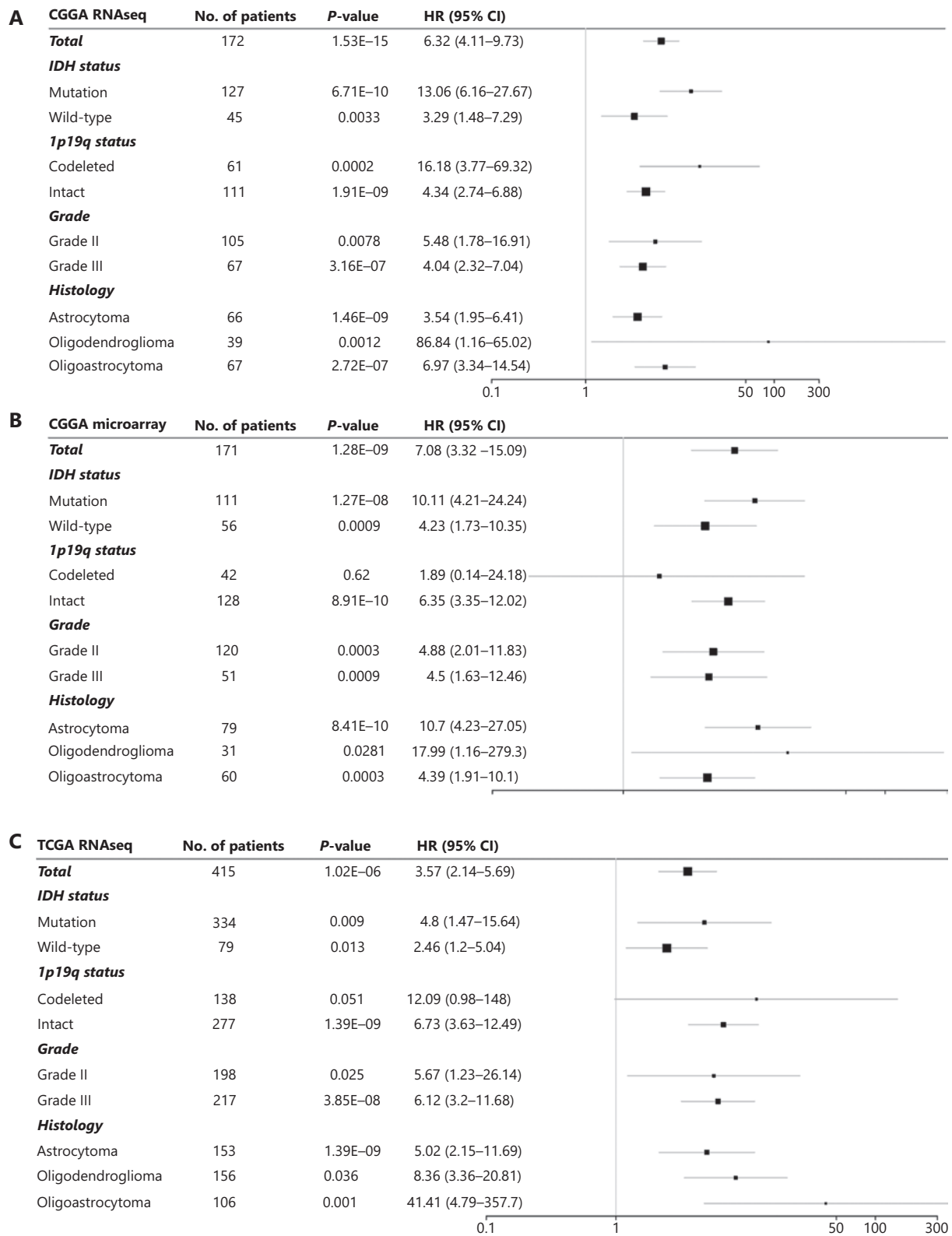


Figure S5 Univariate Cox regression analysis were applied to estimate HR values with continuous score in CGGA RNAseq cohort (A), CGGA microarray cohort (B) and TCGA RNAseq cohort (C) within subgroups for IDH status, 1p/19q status, WHO grade and histology.

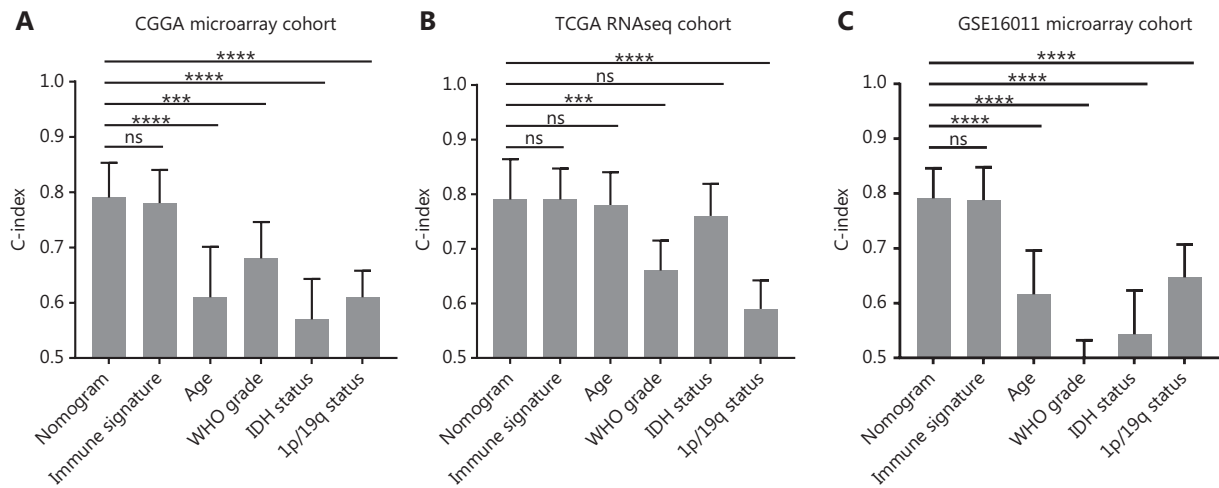


Figure S6 The c-index in predicting OS was compared between the nomogram model and other factors, including immune signature, age, WHO grade, IDH status and 1p/19q status in CGGA microarray cohort (A), TCGA RNAseq cohort (B) and GSE16011 cohort (C) (mean \pm SD; *** P < 0.001, **** P < 0.0001, Student's t test).

