

Supplementary materials

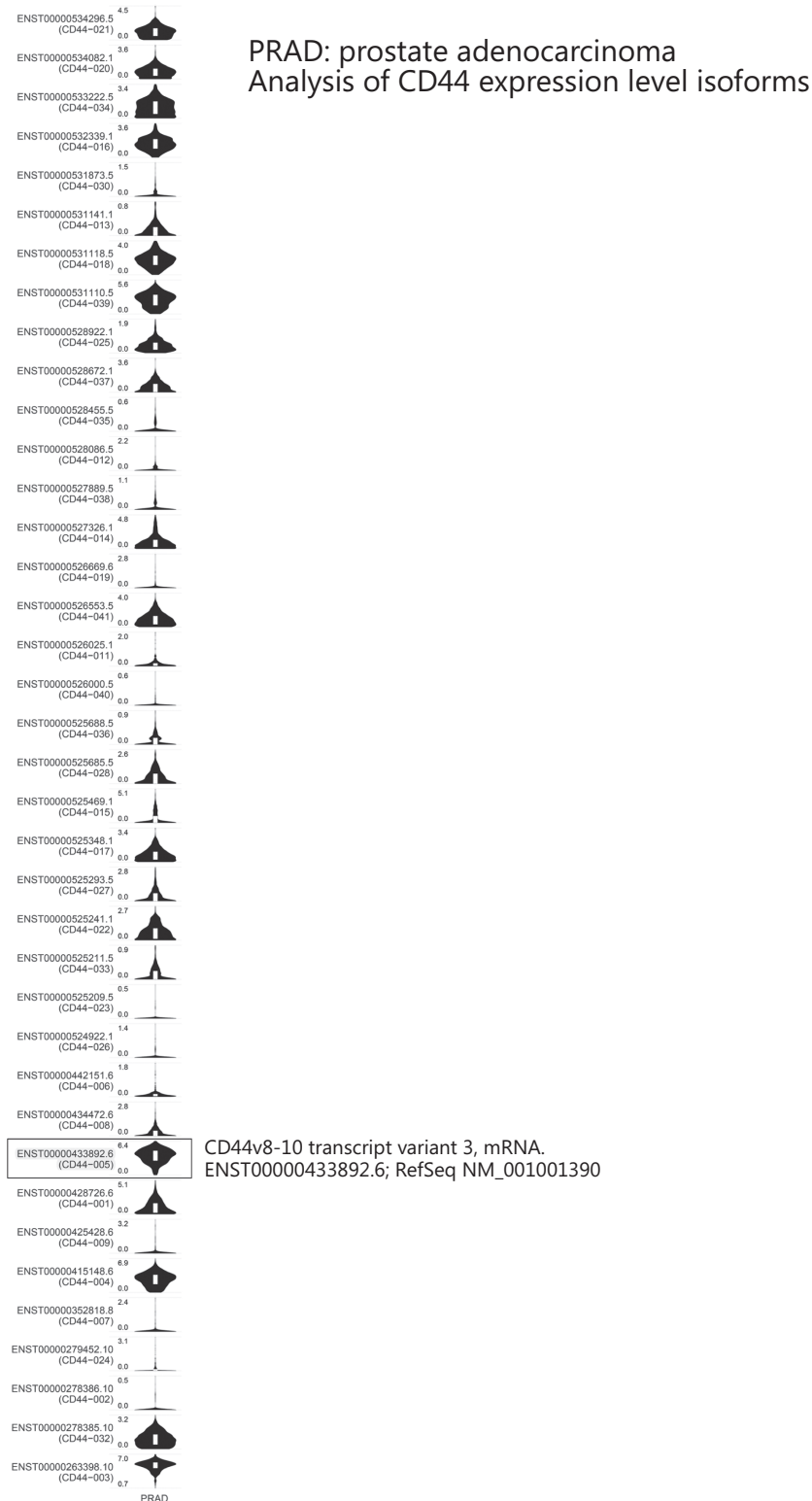


Figure S1 Inhibition of CD44v8-10 expression by specific siRNA treatment.

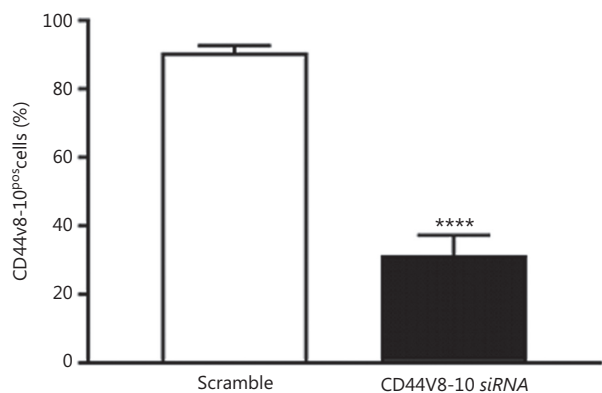


Figure S2 Violin plots showing the expression of CD44 isoforms in PRAD TGCA datasets ($n = 492$). The box-plots (white) represent the mRNA expression. The violin plot outlines (black) illustrate kernel probability density. The CD44v8-10 isoform is indicated in the figure. Scale of the graphs: \log_{10} .

Table S1 List of primers used for gene expression analysis

Target gene	Forward primer	Reverse primer
<i>PPARγ</i>	5'-TCAAACGAGAGTCAGCCTTTAACG-3'	5'-AGTGGGAGTGGTCTCCATTACG-3'
<i>RUNX2</i>	5'-CCCGTGGCCTTCAAGGT-3'	5'-CGTTACCCGCCATGACAGTA-3'
<i>RUNX2</i>	5'-TTACTTACACCCCGCCAGTC-3'	5'-TATGGAGTGCTGCTGGTCTG-3'
<i>β-actin</i>	5'-GAGGCCAGAGCAAGAGAG-3'	5'-AGGTGTGGTGCCAGATTTTC-3'
<i>H3</i>	5'-GTGAAGAAACCTCATCGTTACAGGCCTGGT-3'	5'-CTGCAAAGCACCAATAGCTGCACTCTGGAA-3'
<i>ANKRD1</i>	5'-CTGTGAGGCTGAACCGCTAT-3'	5'-CTGTGAGGCTGAACCGCTAT-3'
<i>Cyr61</i>	5'-AGCCTCGCATCTATAACAAC-3'	5'-TTCTTTCACAA GCGGCACTC-3'
<i>TAZ (WWTR1)</i>	5'-CCATCACTAATAATAGCTCAGATCG-3'	5'-GTGATTACAGCCAGG TTAGAAAG-3'
<i>Col1A1</i>	5'-GATTCCTGGACCTAAAGGTGC-3'	5'-AGCCTCTCCATCTTTGCCAGCA-3'
<i>Col1A2</i>	5'-CCTGGTGCTAAAGGAGAAAGAGG-3'	5'-ATCACCAGCACTTCCAGCAGGA-3'
<i>MPP9</i>	5'-GCCACTACTGTGCCTTTGAGTC-3'	5'-CCCTCAGAGAATCGCCAGTACT-3'
<i>MPP13</i>	5'-AAGGAGCATGGCGACTTCT-3'	5'-TGGCCAGGAGGAAAAGC-3'
<i>IL-6</i>	5'-ATGAACTCTTCTCCACAAGC-3'	5'-GTTTTCTGCCAGTGCCTCTTTG-3'