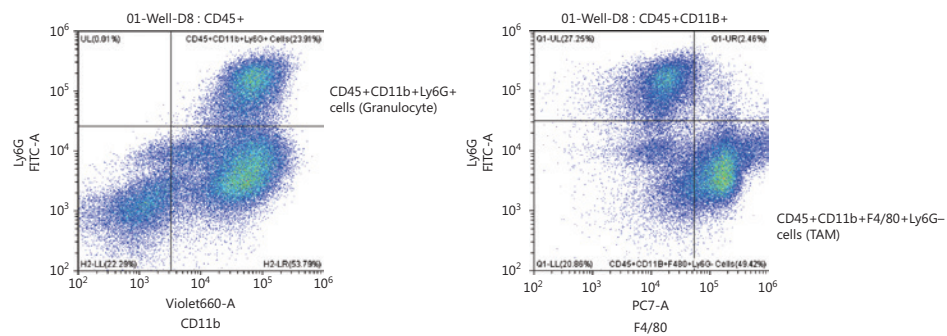


## Supplementary material



**Figure S1** Gating Strategy for flow cytometry of myeloid phenotypes, Granulocytes and TAMs. Processed cells from each mouse were stained with Live Dead Aqua Dead Cell Kit Cells. The cells were then subsequently stained for the following anti-mouse fluorophores CD45-PERCP/Cy5.5, CD11b-BV650, Ly6G-FITC, and F4/80-PE/Cy7. Subsequently were then washed, resuspended in FACs buffer and assayed on a Cytotflex flow cytometer. Seen are the gating strategies for CD45+CD11b+Ly6G+ granulocytes (left) and CD45+CD11b+F480+Ly6G tumor associated macrophages (right).