

## ORIGINAL ARTICLE

# Prognostic value of body mass index before treatment for laryngeal squamous cell carcinoma

Zhao-Qu Li<sup>1,2\*</sup>, Lan Zou<sup>1,2\*</sup>, Tian-Run Liu<sup>3\*</sup>, An-Kui Yang<sup>1,2</sup>

<sup>1</sup>Sun Yat-sen University Cancer Center, State Key Laboratory of Oncology in South China, Collaborative Innovation Center of Cancer Medicine, Guangzhou 510060, China; <sup>2</sup>Department of Head and Neck Surgery, Sun Yat-sen University Cancer Center, Guangzhou 510060, China; <sup>3</sup>Department of Otorhinolaryngology Head and Neck Surgery, The Sixth Affiliated Hospital of Sun Yat-sen University, Guangzhou 510060, China

### ABSTRACT

**Objective:** Patients with head and neck cancer often suffer from malnutrition. This study aims to investigate the influence of body mass index (BMI) on the prognosis of laryngeal squamous cell carcinoma (LSCC).

**Methods:** A total of 473 patients with LSCC initially treated at Sun Yat-sen University Cancer Center between January 2005 and July 2009 were retrospectively reviewed. Survival analysis was performed by the Kaplan-Meier method and Cox regression model.

**Results:** Low BMI before treatment was significantly associated with poor overall survival in patients with LSCC ( $P < 0.001$ ). BMI was an independent prognostic factor for patients with LSCC.

**Conclusion:** Leanness before treatment was associated with poor prognosis in patients with LSCC. Good nutritional status is favorable to improve survival in patients with LSCC.

### KEYWORDS

Prognosis; nutrition; body mass index (BMI); laryngeal squamous cell carcinoma (LSCC)

## Introduction

Head and neck cancer is the sixth most common cancer worldwide, and the most common malignancy of the head and neck is laryngeal squamous cell carcinoma (LSCC)<sup>1,2</sup>. This disease often involves male patients older than 50 years old. LSCC seriously affects the life quality of patients, and the 5-year survival is about 60% regardless of stage, treatment strategy, and tumor location<sup>1,3</sup>.

Several factors are associated with the prognosis of LSCC, including smoking and alcohol consumption, human

papillomavirus and Epstein-Barr virus infections, radiation, and heredity<sup>1,2</sup>. Patients with head and neck cancer often suffer from malnutrition. Nutritional status has been reported to be associated with risk<sup>4</sup> and survival in several types of head and neck cancer, such as oral<sup>5-7</sup> and pharyngeal cancers<sup>8</sup>. Understanding the prognostic value of nutritional status in patients with LSCC bears clinical significance.

Body mass index (BMI), a measure of relative weight based on the mass and height of an individual, is widely used to evaluate nutritional status. BMI has been identified as a possible risk factor for several cancers. Several studies have suggested that high BMI indicates a significantly better prognosis than low BMI for patients with oral cavity and oropharyngeal cancer<sup>5,6,8,9</sup>, whereas other researchers reported conflicting results<sup>7</sup>. However, the influence of BMI on the prognosis of head and neck cancer, including LSCC, remains controversial. In the present study, we investigated the prognostic influence of BMI on LSCC.

\*These authors contributed equally to this work.

Correspondence to: An-Kui Yang

E-mail: yangak@sysucc.org.cn

Received June 5, 2015; accepted September 21, 2015.

Available at [www.cancerbiomed.org](http://www.cancerbiomed.org)

Copyright © 2015 by Cancer Biology & Medicine

## Materials and methods

### Patients and follow up

We retrospectively reviewed 473 patients diagnosed with LSCC and initially treated at Sun Yat-sen University Cancer Center (SYSUCC) between January 2005 and July 2009.

The patients consisted of 456 males (96%) and 17 females (4%). Their ages ranged from 24 to 86 years (median, 59 years). The clinical characteristics of the patients are summarized in **Table 1**. No patient had distant metastasis prior to treatment. Among the 473 patients, 430 underwent surgery, 17 received chemotherapy and radiation treatment after surgery, 32 received radiotherapy, and 21 received chemotherapy after surgery. Surgical margins

**Table 1** Association of BMI status with the clinical characteristics of patients with LSCC

Factors	BMI status (n=473)			P
	Low, n (%)	Medium, n (%)	High, n (%)	
Age (years)				0.972
≥60	41 (49.4)	144 (48.6)	47 (50.0)	
<60	42 (50.6)	152 (51.4)	47 (50.0)	
Gender				0.320
Male	79 (95.2)	284 (95.9)	93 (98.9)	
Female	4 (4.8)	12 (4.1)	1 (1.1)	
Smoking				0.249
Never	4 (4.8)	11 (3.7)	1 (1.1)	
Former	8 (9.6)	34 (11.5)	17 (18.0)	
Current	71 (85.6)	251 (84.8)	76 (80.9)	
Alcohol				0.056
Never	5 (6.0)	14 (4.7)	1 (1.1)	
Former	48 (57.8)	179 (60.5)	71 (75.5)	
Current	30 (36.2)	103 (34.8)	22 (23.4)	
T stage				0.029
T <sub>1</sub>	25 (30.1)	125 (42.2)	51 (54.2)	
T <sub>2</sub>	19 (22.9)	75 (25.3)	20 (21.3)	
T <sub>3</sub>	21 (25.3)	49 (16.6)	14 (14.9)	
T <sub>4a</sub> +T <sub>4b</sub>	18 (21.7)	47 (15.9)	9 (9.6)	
N stage				<0.001
N <sub>0</sub>	47 (56.6)	234 (79.1)	82 (87.2)	
N <sub>1</sub>	15 (18.1)	27 (9.1)	3 (3.2)	
N <sub>2a</sub> +N <sub>2b</sub> +N <sub>2c</sub>	17 (20.5)	32 (10.8)	9 (9.6)	
N <sub>3</sub>	4 (4.8)	3 (1.0)	0 (0)	
Pathology grade				0.177
Well	41 (49.4)	159 (53.7)	62 (66.0)	
Moderate	33 (39.8)	111 (37.5)	24 (25.5)	
Poor	9 (10.8)	26 (8.8)	8 (8.5)	
Tumor location				0.042
Supraglottis	29 (34.9)	74 (25.0)	15 (15.9)	
Glottis	53 (63.9)	214 (72.3)	78 (83.0)	
Subglottis	1 (1.2)	8 (2.7)	1 (1.1)	
Total	83	296	94	

BMI, body mass index; LSCC, laryngeal squamous cell carcinoma.

were free of disease.

Of the 43 patients who did not undergo surgery, 11 received radiation treatment, 22 underwent chemotherapy, and 10 underwent both chemotherapy and radiation treatment.

The survival time was defined as the period from the date of the initial treatment to the date of death or final follow up (July 2014). This study followed the Declaration of Helsinki on medical protocol and ethics, and it was approved by the Institutional Review Board at SYSUCC. Written informed consent was obtained from all patients for the publication of this study.

### Criteria for nutritional status

The nutritional status of the patients was classified by BMI in accordance with Asian-specific BMI cutoff points as follows: overweight ( $\geq 25 \text{ kg/m}^2$ ), normal weight ( $\geq 18.5$  and  $< 25 \text{ kg/m}^2$ ), or underweight ( $< 18.5 \text{ kg/m}^2$ )<sup>10</sup>. The BMI data were obtained before treatment.

### Statistical analysis

The Chi-square test and Kruskal-Wallis H test were used for bivariate analysis. Kaplan-Meier and log-rank tests were used for survival analysis. Multivariate Cox regression analysis was performed for significant variables found using univariate analysis. SPSS 16.0 was used for all analyses.  $P < 0.05$  was considered statistically significant.

## Results

### Patient characteristics and bivariate analysis

A total of 473 patients participated in this study. The clinicopathological characteristics of the patients are summarized in **Table 1**. Among the 473 patients, 83 (17%) were underweight, 296 (63%) were of normal weight, and 94 (20%) were overweight based on their BMI. The groups of patients with different BMI statuses showed similar distributions of host and tumor factors, including age, gender, smoking and alcohol intake, and pathology grade. Patients with low BMI showed a high incidence of advanced T stage (47.0% vs. 32.5% vs. 24.5%,  $P = 0.029$ ) and N stage (25.3% vs. 11.8% vs. 9.6%,  $P < 0.001$ ; **Table 1**).

All patients were divided into the survival and non-survival groups. The survival group consisted of 332 patients (70%), and the non-survival group comprised 141 patients (30%). The bivariate analysis of factors between the groups is presented in **Table 2**. The two groups showed significant differences in age,

smoking and alcohol intake, T stage, N stage, pathology grade, treatment strategy, tumor location, and BMI status. However, no significant difference was found in gender between the two groups.

### Prognostic value of BMI

The overall 5-year survival rate of these patients was 72.3%. **Figure 1** reveals that the underweight patients had the lowest survival, whereas the overweight patients had the best survival ( $P < 0.001$ ). The 5-year overall survival rates of the overweight group, normal weight group, and underweight group were 87.2%, 78.0%, and 34.9%, respectively. The median survival time of the underweight group was 29.6 months.

The Cox proportional hazards model was used to verify whether the BMI status and other variables are independent prognostic factors for LSCC patients. Univariate analysis showed that age, history of smoking and alcohol intake, T stage, N stage, pathology grade, tumor location, treatment strategy, and BMI were associated with survival in patients with LSCC. Multivariate analysis of these variables showed that age, history of smoking and alcohol intake, T stage, N stage, pathology grade, treatment strategy, and BMI were independent prognostic factors for patients with LSCC, and low BMI was significantly associated with poor prognosis (**Table 3**).

## Discussion

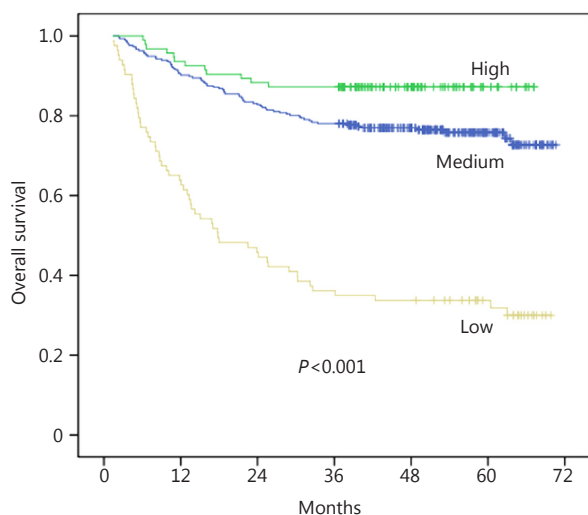
Our study demonstrated that BMI was significantly associated with the prognosis of LSCC, and low BMI before treatment predicted poor prognosis in patients with LSCC.

Malnutritional status is reportedly associated with poor prognosis in several types of cancers<sup>4,8,11</sup>. In these studies, leanness was found to be associated with increased risk for head and neck cancer regardless of the smoking and drinking status, and it was reported as an early marker of oral and pharyngeal cancer<sup>4-8</sup>. For example, oral cancer patients with a BMI  $< 22.8 \text{ kg/m}^2$  have poor prognosis, and weight loss can predict poor prognosis in recurrent oral and oropharyngeal carcinoma<sup>5,6</sup>. A previous retrospective analysis reported that patients with head and neck cancer and preoperative weight loss greater than 5% show poor outcome<sup>11</sup>. Notably, a study by Iyengar *et al.*<sup>7</sup> indicated that obesity is an independent predictor of increased risk of death for patients with early-stage oral tongue cancer. These conflicting results may be due to an inadequate sample size and inconsistent BMI cutoff values. These studies also found various tumor sites in the oral cavity, oropharynx, and larynx with various types of histopathology. In the current study, a total of 473 patients

**Table 2** Bivariate descriptive analysis of patients with LSCC

Factors	No. of patients (%)			<i>P</i>
	Total (%)	Survival group	Non-survival group	
Age (years)				0.003
≥60	232 (49)	148 (45)	84 (60)	
<60	241 (51)	184 (55)	57 (40)	
Gender				0.264
Male	456 (96)	318 (96)	138 (98)	
Female	17 (4)	14 (4)	3 (2)	
Smoking				0.494
Never	16 (3)	13 (4)	3 (2)	
Former	59 (13)	39 (12)	20 (14)	
Current	398 (84)	280 (84)	118 (84)	
Alcohol				0.034
Never	20 (4)	16 (5)	4 (3)	
Former	298 (63)	219 (66)	79 (56)	
Current	155 (33)	97 (29)	58 (41)	
T stage				<0.001
T <sub>1</sub>	201 (42)	176 (53)	25 (18)	
T <sub>2</sub>	114 (24)	77 (23)	37 (26)	
T <sub>3</sub>	84 (18)	45 (14)	39 (28)	
T <sub>4a</sub> +T <sub>4b</sub>	74 (16)	34 (10)	40 (28)	
N stage				<0.001
N <sub>0</sub>	363 (77)	292 (88)	71 (50)	
N <sub>1</sub>	45 (10)	18 (5)	27 (19)	
N <sub>2a</sub> +N <sub>2b</sub> +N <sub>2c</sub>	58 (12)	22 (7)	36 (26)	
N <sub>3</sub>	7 (1)	0 (0)	7 (5)	
Pathology grade				<0.001
Well	262 (55)	209 (63)	53 (38)	
Moderate	168 (36)	107 (32)	61 (43)	
Poor	43 (9)	16 (5)	27 (19)	
Treatment				<0.001
Surgery alone	363 (77)	284 (86)	79 (56)	
Surgery + radiotherapy	33 (7)	20 (6)	13 (9)	
Surgery + chemotherapy	16 (3)	6 (1)	10 (7)	
Surgery + chemoradiotherapy	18 (4)	10 (3)	8 (6)	
Chemoradiotherapy	24 (5)	12 (4)	12 (9)	
Chemotherapy	19 (4)	0 (0)	19 (13)	
Tumor location				0.001
Supraglottis	118 (25)	67 (20)	51 (36)	
Glottis	345 (73)	259 (78)	86 (61)	
Subglottis	10 (22)	6 (2)	4 (3)	
BMI				<0.001
High	94 (20)	82 (25)	12 (9)	
Medium	296 (63)	224 (67)	72 (51)	
Low	83 (17)	26 (8)	57 (40)	
Total	473	332	141	

LSCC, laryngeal squamous cell carcinoma; BMI, body mass index.



**Figure 1** Kaplan-Meier curves for overall survival according to BMI.

diagnosed with LSCC were analyzed, and the patients were classified according to Asian-specific BMI cutoff values. We found that low BMI was significantly associated with poor survival in LSCC, which was in agreement with previous data.

Malnutrition commonly occurs in patients with head and neck cancer, particularly in laryngeal cancer, which seriously affects the quality of life and nutritional status of the patient. Thus, weight loss before treatment is associated with poor prognosis. In China, underweight patients are associated with low income and education. These patients are less likely to receive proper treatment at an early stage. In addition, good nutritional status can improve survival by strengthening immunity and helping patients develop a high tolerance for extended therapeutic periods. However, our conclusion requires further demonstration. We found that patients with low BMI showed an increased incidence of advanced T and N stages,

**Table 3** Univariate and multivariate Cox regression analysis for overall survival in patients with LSCC

Factors	Univariate analysis		Multivariate analysis	
	HR (95% CI)	<i>P</i>	HR (95% CI)	<i>P</i>
Age	1.658 (1.184-2.321)	0.003	1.854 (1.297-2.650)	0.001
Gender	0.540 (0.172-1.695)	0.291		
Smoking	0.821 (0.547-1.231)	0.340		
Alcohol	1.247 (0.953-1.633)	0.108		
T stage				
T <sub>1</sub>	Ref		Ref	
T <sub>2</sub>	2.862 (1.723-4.574)	<0.001	1.852 (1.060-3.233)	0.030
T <sub>3</sub>	4.881 (2.953-8.069)	<0.001	2.535 (1.442-4.454)	0.001
T <sub>4a</sub> +T <sub>4b</sub>	6.207 (3.761-10.244)	<0.001	2.842 (1.585-5.096)	<0.001
N stage				
N <sub>0</sub>	Ref		Ref	
N <sub>1</sub>	4.183 (2.683-6.523)	<0.001	2.077 (1.269-3.401)	0.004
N <sub>2a</sub> +N <sub>2b</sub> +N <sub>2c</sub>	4.681 (3.130-7.003)	<0.001	2.088 (1.263-3.452)	0.004
N <sub>3</sub>	25.230 (11.173-56.972)	<0.001	7.659 (2.919-20.102)	<0.001
Pathology grade				
Well	Ref		Ref	
Moderate	2.060 (1.430-2.969)	<0.001	1.497 (1.010-2.219)	0.044
Poor	4.133 (2.564-6.661)	<0.001	1.791 (1.047-3.064)	0.033
Tumor location	0.562 (0.401-0.787)	0.001	1.197 (0.847-1.691)	0.308
Treatment	1.540 (1.407-1.687)	<0.001	1.259 (1.123-1.413)	<0.001
BMI	1.964 (1.616-2.388)	<0.001	1.747 (1.433-2.130)	<0.001

LSCC, laryngeal squamous cell carcinoma; BMI, body mass index.

which may also contribute to decreased survival in patients with low BMI.

The present study demonstrated that patients over 60 years old exhibited low survival rates. Aging patients with oral tongue cancer have been reported to have high disease-specific mortality<sup>12</sup>. This finding suggested increased vulnerability to deterioration of nutritional or physical status among old patients. Heavy tobacco and alcohol consumption were determined to be adverse prognostic factors in patients with head and neck cancer, including laryngeal cancer<sup>13</sup>. Another study identified heavy alcohol consumption as a risk factor for malnutrition<sup>14</sup>. Postoperative complications have also been reported to be associated with poor prognosis in patients with oral cancer<sup>15</sup>. The present study found similar factors that could contribute to the advanced disease stage or poor general condition, both of which could increase the risk of developing complications. Developing complications would inevitably delay the administration of standard therapy, leading to recurrence or distal metastasis. Recurrence or distal metastasis may negatively affect initial treatment. Consequently, patients with low BMI have poor prognosis<sup>5</sup>.

The molecular and cellular mechanisms by which BMI affects the prognosis of cancer are complicated and unclear. Several studies have shown that a specific enteral nutrition formula containing n-3 fatty acid can prevent the deterioration of nutritional status during chemoradiation therapy for head and neck cancer; triglycerides have also been reported to promote cancer cell proliferation, and this anti-apoptotic activity is probably due to the generation of reactive oxygen species and oxidative stress, which leads to DNA damage<sup>16,17</sup>. Levels of adipokine, leptin, and adiponectin influence obesity and several signal transduction pathways involved in cell survival<sup>18</sup>. Another study reported that obesity induces insulin-resistance through the accumulation of macrophages that secrete inflammatory mediators, such as tumor necrosis factor- $\alpha$ , interleukin-6, and prostaglandin E2<sup>19</sup>. The insulin receptor activating signaling pathways are also associated with invasion and metastasis of malignant tumors<sup>20</sup>. However, the mechanisms require further study.

## Conclusion

Our study proved that BMI was an independent prognostic factor for patients with LSCC, and low BMI before treatment could predict poor prognosis for patients with LSCC. Good nutritional status could improve survival in patients with LSCC. However, our study was limited by the retrospective design. Thus, further studies are necessary to verify the correlation

between BMI and the prognosis of LSCC.

## Acknowledgements

This work was supported by the Science and Technology Planning Project of Guangdong Province, China (Grant No. 2010B031600237).

## Conflict of interest statement

No potential conflicts of interest are disclosed.

## References

1. Markou K, Christoforidou A, Karasmanis I, Tsiropoulos G, Triaridis S, Constantinidis I, et al. Laryngeal cancer: epidemiological data from Northern Greece and review of the literature. *Hippokratia* 2013;17:313-318.
2. De Stefani E, Boffetta P, Deneo-Pellegrini H, Brennan P, Correa P, Oreggia F, et al. Supraglottic and glottic carcinomas: epidemiologically distinct entities? *Int J Cancer* 2004;112:1065-1071.
3. Machiels JP, Lambrecht M, Hanin FX, Duprez T, Gregoire V, Schmitz S, et al. Advances in the management of squamous cell carcinoma of the head and neck. *F1000Prime Rep* 2014;6:44.
4. Gaudet MM, Olshan AF, Chuang SC, Berthiller J, Zhang ZF, Lissowska J, et al. Body mass index and risk of head and neck cancer in a pooled analysis of case-control studies in the International Head and Neck Cancer Epidemiology (INHANCE) Consortium. *Int J Epidemiol* 2010;39:1091-1102.
5. Liu SA, Tsai WC, Wong YK, Lin JC, Poon CK, Chao SY, et al. Nutritional factors and survival of patients with oral cancer. *Head Neck* 2006;28:998-1007.
6. Nguyen TV, Yueh B. Weight loss predicts mortality after recurrent oral cavity and oropharyngeal carcinomas. *Cancer* 2002;95:553-562.
7. Iyengar NM, Kochhar A, Morris PG, Morris LG, Zhou XK, Ghossein RA, et al. Impact of obesity on the survival of patients with early-stage squamous cell carcinoma of the oral tongue. *Cancer* 2014;120:983-991.
8. Franceschi S, Dal Maso L, Levi F, Conti E, Talamini R, La Vecchia C. Leanness as early marker of cancer of the oral cavity and pharynx. *Ann Oncol* 2001;12:331-336.
9. Takenaka Y, Takemoto N, Nakahara S, Yamamoto Y, Yasui T, Hanamoto A, et al. Prognostic significance of body mass index before treatment for head and neck cancer. *Head Neck* 2015;37:1518-1523.
10. Choi Y, Park B, Jeong BC, Seo SI, Jeon SS, Choi HY, et al. Body mass index and survival in patients with renal cell carcinoma: a clinical-based cohort and meta-analysis. *Int J Cancer*

- 2013;132:625-634.
11. van Bokhorst-de van der Schuer, van Leeuwen PA, Kuik DJ, Klop WM, Sauerwein HP, Snow GB, et al. The impact of nutritional status on the prognoses of patients with advanced head and neck cancer. *Cancer* 1999;86:519-527.
  12. Davidson BJ, Root WA, Trock BJ. Age and survival from squamous cell carcinoma of the oral tongue. *Head Neck* 2001;23:273-279.
  13. Reyes-Gibby CC, Anderson KO, Merriman KW, Todd KH, Shete SS, Hanna EY. Survival patterns in squamous cell carcinoma of the head and neck: pain as an independent prognostic factor for survival. *J Pain* 2014;15:1015-1022.
  14. Righini CA, Timi N, Junet P, Bertolo A, Reyt E, Atallah I. Assessment of nutritional status at the time of diagnosis in patients treated for head and neck cancer. *Eur Ann Otorhinolaryngol Head Neck Dis* 2013;130:8-14.
  15. de Melo GM, Ribeiro KC, Kowalski LP, Deheinzelin D. Risk factors for postoperative complications in oral cancer and their prognostic implications. *Arch Otolaryngol Head Neck Surg* 2001;127:828-833.
  16. Fietkau R, Lewitzki V, Kuhnt T, Hölscher T, Hess CF, Berger B, et al. A disease-specific enteral nutrition formula improves nutritional status and functional performance in patients with head and neck and esophageal cancer undergoing chemoradiotherapy: results of a randomized, controlled, multicenter trial. *Cancer* 2013;119:3343-3353.
  17. Cowey S, Hardy RW. The metabolic syndrome: A high-risk state for cancer? *Am J Pathol* 2006;169:1505-1522.
  18. van Kruijsdijk RC, van der Wall E, Visseren FL. Obesity and cancer: the role of dysfunctional adipose tissue. *Cancer Epidemiol Biomarkers Prev* 2009;18:2569-2578.
  19. Olefsky JM, Glass CK. Macrophages, inflammation, and insulin resistance. *Annu Rev Physiol* 2010;72:219-246.
  20. Penaranda EK, Shokar N, Ortiz M. Relationship between metabolic syndrome and history of cervical cancer among a US national population. *ISRN Oncol* 2013;2013:840964.
- Cite this article as:** Li ZQ, Zou L, Liu TR, Yang AK. Prognostic value of body mass index before treatment for laryngeal squamous cell carcinoma. *Cancer Biol Med* 2015;12:394-400. doi: 10.7497/j.issn.2095-3941.2015.0043